



Deal Indoor Tennis Centre

WELFARE OFFICER



VANESSA WEBB

01304 379061 / 01304 373399

vanessa.webb@yourleisure.uk.com

Vanessa can be found on site by contacting the reception team.

- Safeguarding children in Tennis.
- Safeguarding and Protection in Tennis for children, Young People and Adults.
- LTA Time to Listen training for Club Welfare officers



SAFEGUARDING POLICY

The Deal Indoor Tennis Centre is committed to prioritising the well-being of all children and adults at risk by promoting safeguarding in our club, including during all programmes, competitions and events we run.

This policy strives to minimise risk, deliver a positive tennis experience for everyone and respond appropriately to all safeguarding concerns/disclosures.

Safe and Inclusive Code of Conduct

All employees, those under contractual arrangements, club officials, leaders, volunteers, members and others using the club facilities are required to abide by this Code of Conduct. This is required to support the club in providing a welcoming and safe environment for all children and young people and in the implementation of its child protection policy and procedures.

Those working in the club should always:

- Prioritise the well-being of all children and adults at all times
- Be a positive role model. Act with integrity, even when no one is looking
- Help to create a safe and inclusive environment both on and off court and promote the Fair Play values: enjoy; respect
- Value and celebrate diversity and make all reasonable efforts to meet individual needs
- Keep clear boundaries between your professional and personal life, including on social media
- Check you have the relevant consent from parents/carers, children and adults before taking or using photos and videos
- Ensure your own roles and responsibilities, and those of everyone you are responsible for, are clearly outlined and everyone has the information, training and support to carry them out
- Where possible, do not be alone with a child or adult at risk
- Do not abuse, neglect, harm or discriminate against anyone; or act in a way that may be interpreted as such
- **Doing nothing is NOT an option: report all concerns and disclosures as soon as possible, following the Concern Reporting Procedure. If someone is in immediate danger, call the police (999)**

The Code of Conduct should be interpreted in a spirit of integrity, transparency and common sense, with the best interests of children and adults at risk as the primary consideration.

Concern Reporting Procedure

Anyone who is concerned about the well-being of a child/ adult at risk, or has a disclosure of abuse or neglect made to them must:

If someone IS in immediate danger Call the police (999).

RESPOND

- Listen carefully, do not interrupt.
- Keep questions to a minimum.
- Do not promise to keep the information secret.

REFER

- **If someone IS in immediate danger Call the police (999).**
- Speak to your Welfare Officer immediately, who will report it to the LTA Safeguarding Team.
- If they are unavailable contact the LTA Safe and Inclusive Tennis Team or NSPCC for advice.

- Inform the parent/carer of the concern, unless you believe it will put the child, adult at risk or yourself at risk.

RECORD

- Ask our Welfare Officer for a Reporting Concern Form or download one from the LTA website.
- Complete the form within 48 hours of the concern and return it to the Welfare Officer.

Contact Details.

- Welfare Officer – Vanessa Webb Vanessa.webb@yourleisure.uk.com 01304 373399
- The British Tennis Safeguarding Team-020 8487 7000 (Office Hours)
- NSPCC- 0808 800 5000 (Outside Office Hours).
- KCC Local Authority Designated Officer (LADO) 03000 41 08 88
- kentchildrenslado@kent.gov.uk.

PLEASE NOTE:

Our Full Safeguarding Policy along with all other policies listed below:

Diversity and Inclusion Policy

What's the Score Safe and Inclusive Tennis Toolkit

Whistleblowing Statement

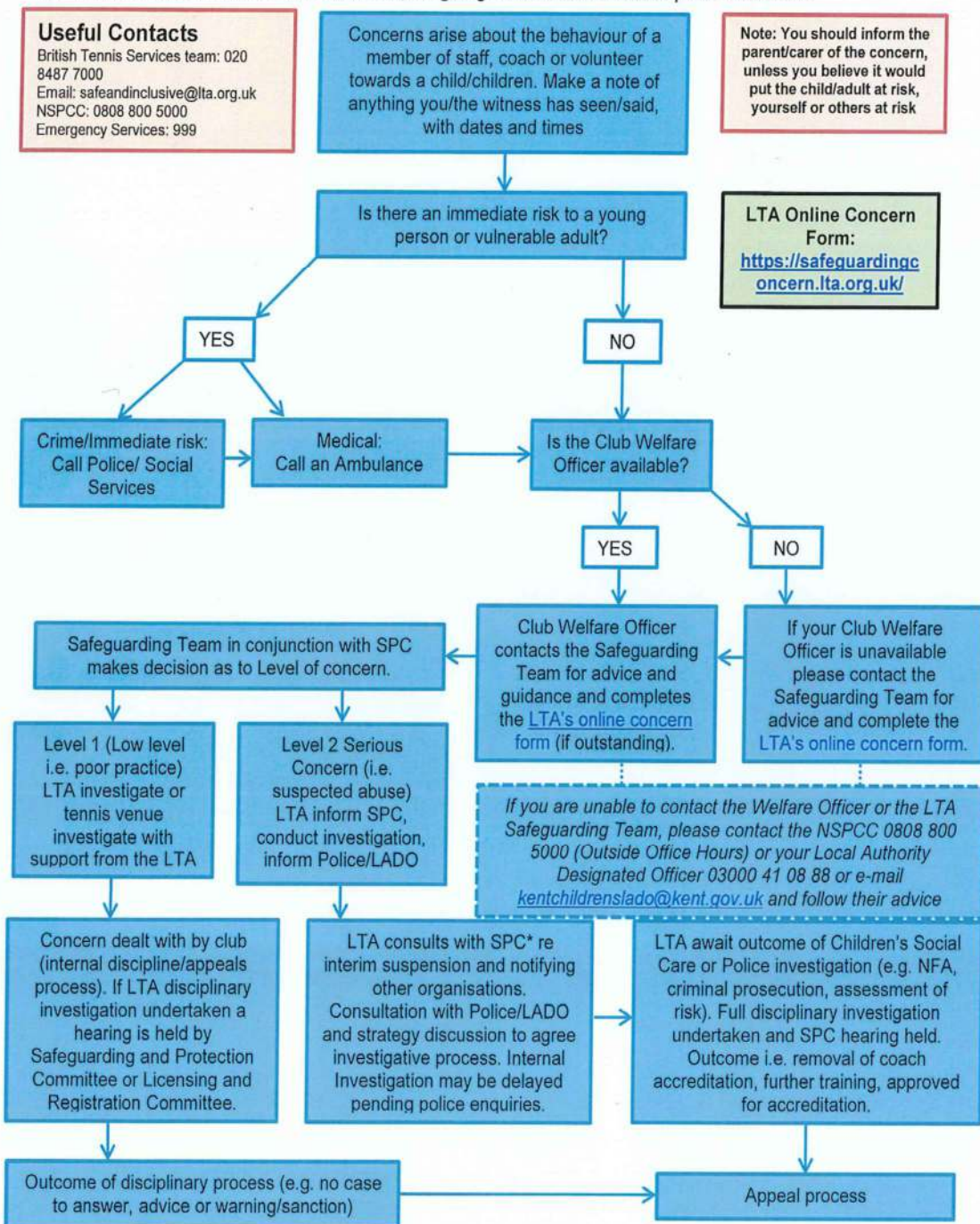
Safe Recruitment Statement

Are available to view on request from Reception.

Reporting a Safeguarding Concern within the Tennis Environment

How to respond to allegations against a member of staff/volunteer or another young person within the Tennis Environment.

For Tennis Wales / Tennis Scotland cases, on-going consultation will take place with them.



County Local Authority Designated Officer Contacts

The County LADO Service deals with allegations against staff who work with children either in education or the wider children's workforce.

If you need to speak to the LADO Service regarding an **allegation** against a member of staff **please make contact with one of the Contact & Referral Officers on the below number or complete a referral form**. Your details will be taken and passed to the LADO on duty that day. The same LADO will support you through the process until the matter has been resolved. Please note that the LADO service no longer works on an area basis.

County LADO Service contact number: 03000 410 888 Email: kentchildrenslado@kent.gov.uk	
Kroner House	
Ali Watling County LADO Manager	Contact & Referral Officer & PA to LADO Manager Emma Cumberbatch Contact & Referral Officer Sára Blenkinsop
Lorrisa Webber LADO	Hollie Priestley LADO
Marie Jackson LADO	James Borland LADO
Susannah Burden LADO	
Link to Referral form: https://www.kscb.org.uk/procedures/local-authority-designated-officer-lado	
<p>If a call is <u>urgent</u> i.e. a child is in immediate danger and requires safeguarding call through to the Front Door on: 03000 41 11 11</p> <p>Urgent child protection issues outside of office hours: Call Out of Hours on: 03000 41 91 91</p>	